



D2 LED Fog Light Kit
2018 Honda Gold Wing
 LAH.01.10600

Thank you for choosing DENALI

We know you would rather be riding your bike than wrenching on it, so we go the extra mile to make sure our instructions are clear and as easy to understand as possible. If you have any questions, comments, or suggestions don't hesitate to give our gear experts a call at 401.360.2550 or visit WWW.DENALIELECTRONICS.COM

Please Read Before Installing

DENALI products should always be installed by a qualified motorcycle technician. If you are unsure of your ability to properly install a product, please have the product installed by your local motorcycle dealer. DENALI takes no responsibility for damages caused by improper installation. **Caution:** When installing electronics it is extremely important to pay close attention to how wires are routed, especially when mounting products to the front fender, front forks, or fairing of your motorcycle. Always be sure to turn the handlebars fully left, fully right, and fully compress the suspension to ensure the wires will not bind and have enough slack for your motorcycle to operate properly.

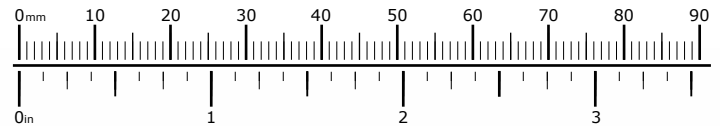
Installation Tips

We strongly recommend using medium strength liquid thread locker on all screws, nuts, and bolts. It is also important to ensure that all hardware is tightened to the proper torque specifications as listed in your owner's manual. For included accessory hardware please refer to the default torque specifications provided below. Inspect all hardware after the first 30 miles to ensure proper torque specifications are maintained.

Bolt Size	in-lbs	ft-lbs	Nm
M3	10.0 in-lbs	-	1.0 Nm
M4	23.0 in-lbs	-	2.5 Nm
M5	44.5 in-lbs	3.5 ft-lbs	5.0 Nm
M6	78.0 in-lbs	6.5 ft-lbs	9.0 Nm
M8	-	13.5 ft-lbs	18.0 Nm
M10	-	30.0 ft-lbs	41.0 Nm
M12	-	52.0 ft-lbs	71.0 Nm

Hardware Sizing Guide

Not sure what size bolt you have? Use this ruler to measure screws, bolts, spacers, etc. Remember, the length of a screw or bolt is measured from the start of the "mounting surface" to the end of the screw, so only include the screw head when measuring countersunk screws.



What's In The Kit?



Kit Contents

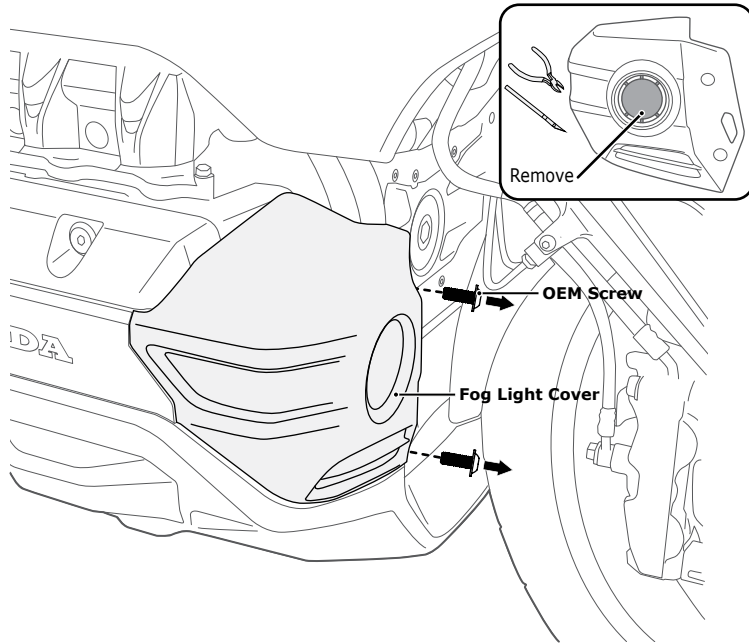
(a) DENALI D2 2.0 TriOptic LED Light Kit.....Qty 1

(b) DENALI Motorcycle Engine Guard/Crashbar Light Mount Kit.....Qty 1

Note: Please refer to the individual instruction manuals supplied with each item for more in depth explanations regarding mounting and wiring of the kit.



1. Installing The Fog Light Kit

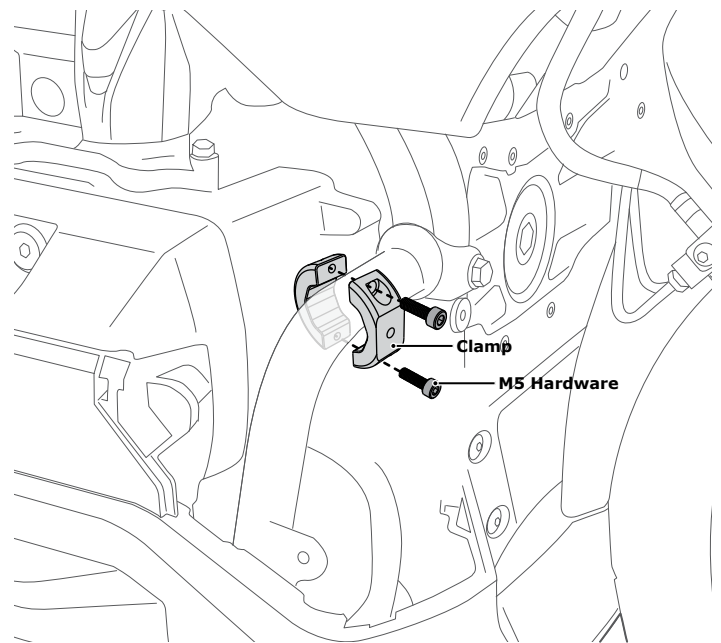


1.1 - Removing The Fog Light Cover

Step One: Remove the two OEM screws from the Fog Light Cover. Set these screws aside as you will use these to reinstall the Cover.

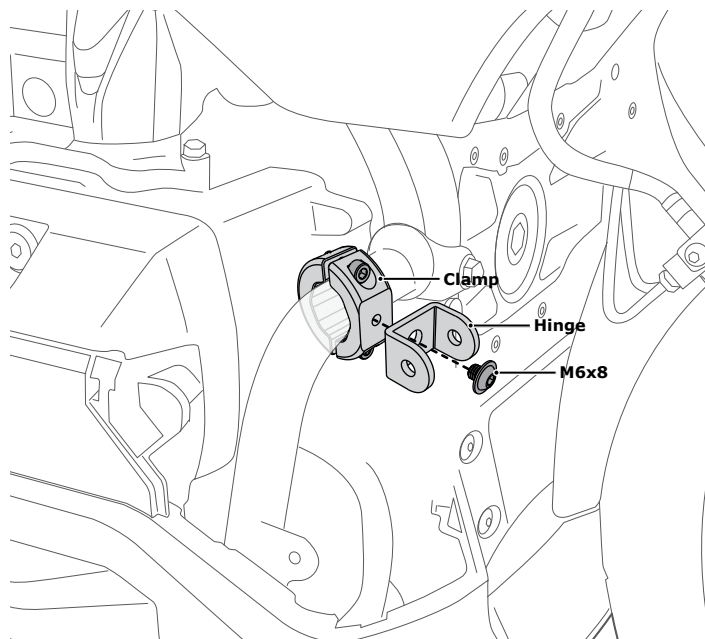
Step Two: Gently pull the Cover towards the front of the motorcycle to remove.

Step Three: Use a pair of snips to cut the six small tabs securing the Blanking Plate to the Fog Light Cover. After cutting use a razor blade or file to carefully clean up the profile and remove any burrs.



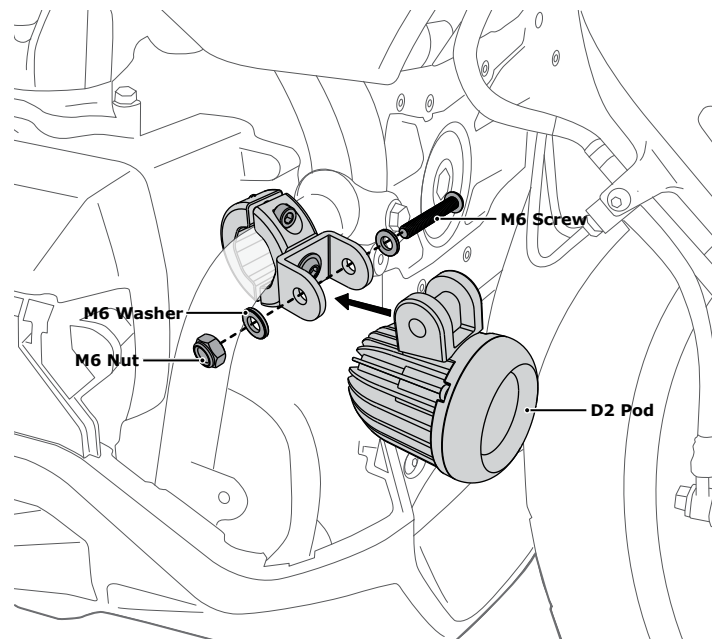
1.2 - Installing The Clamp

Step One: Install the Clamp onto the engine guard using the M5 hardware provided with the Crashbar Clamp Kit. Do not fully tighten the Clamp at this time, leave the Clamp loose enough that its position on the bar can be adjusted.



2.1 - Installing The Hinge

Step One: Use the M6x8 Screw that is included with the Crashbar Clamp Kit to attach the Hinge of the Light Pod to the Clamp. Align the Hinge so that it sits in a horizontal orientation and fully tighten the M6 screw.



2.2 - Installing The Light Pod

Step One: Use the M6 Screw, Washers and Nut to attach the D2 Light Pod to the Hinge.

Step Two: Test fit the Fog Light Cover to see where the light sits in relation to the cut out. Make adjustments to the position of the Light Pod and Clamp and continue test fitting the Fog Light Cover until the Light Pod is centered in the cut out and pointing straight down the road.

Step Three: Once satisfied with the alignment fully tighten all hardware and reinstall the Fog Light Cover.